

D.A.V PUBLIC SCHOOL

DVC MTPS, BANKURA, 722183 (W.B.)

Summer Holiday Homework

Session-2025-26

CLASS-VIII



DAV PUBLIC SCHOOL, DVC, MTPS, BANKURA
HOLIDAY HOMEWORK
SESSION 2025-2026
CLASS – VIII

SUBJECT - ENGLISH.

I. Answer the following questions in 120 words.

1. Reflect on how the king's initial quest to find answers to his three questions transforms into a realization of the importance of compassion and timely action after meeting the hermit. Discuss the implications of this transformation. (**Three Questions**)
2. Aging is often seen as a limitation, yet Granny embraces it with humor and confidence. Discuss the importance of maintaining one's passions and breaking stereotypes, using Granny's story as an example. (**Granny's Tree Climbing**)
3. Imagine yourself as the wounded man who was saved by the king. Write a letter to the king expressing your gratitude and explaining how this experience has changed your perspective on life. (**Three Questions**)
4. Imagine you are Dr. Kalam during your childhood days, struggling with poverty and responsibilities. Write a diary entry describing a particularly difficult day and how your mother's guidance helped you push forward. (**My Mother**)

II. Complete the following story using the correct form of the verbs in brackets:

Last winter, my family and I _____ (plan) a trip to the mountains. We _____ (leave) early in the morning and _____ (reach) our destination by afternoon. The view _____ (be) breathtaking, and we _____ (decide) to explore the nearby trails. While we _____ (walk), we _____ (notice) footprints in the snow. Suddenly, my younger brother _____ (slip) on the icy path, but luckily, we _____ (help) him up quickly. As we (move) ahead, the wind _____ (grow) stronger, and it _____ (start) snowing heavily. We (look) for a safe spot to rest, and soon, we (find) a small hut. We _____ (enter) and _____ (light) a fire to keep warm. By the time the snow _____ (stop), it _____ (be) already late evening, so we _____ (choose) to stay the night before heading back home the next morning.

III. You are Megha gupta/ Mehul Gupta, the head girl/ head boy of St Mary's school, Dehradun. Draft a notice, informing the students of classes VIII to XII about a workshop on 'table manners and etiquettes' to be held in the school premises. Give all the necessary details.

Subject - Hindi

1. दिए गए प्रश्नों के निर्देशानुसार उत्तर लिखिए:-

- i) 'अनु' और 'अति' उपसर्ग में मूल शब्द जोड़कर नया शब्द बनाइए।
 - ii) 'स्वागत' शब्द में प्रयुक्त उपसर्ग को छाँटकर लिखिए।
 - iii) 'प्रभु' शब्द में उचित प्रत्यय का प्रयोग करते हुए नया शब्द बनाइए।
 - iv) निम्नलिखित शब्दों में अनुस्वार अथवा अनुनासिक का चिह्न उचित स्थान पर लगाइए-
(क) सस्मरण (ख) ऊची (ग) सत्सग
 - v) निम्नलिखित शब्दों में 'र' के उचित रूप का प्रयोग कीजिए-
(क) धम (ख) राष्ट्र (ग) आशीवाद
 - vi) 'उपहार' और 'नदी' शब्द के दो पर्यायवाची शब्द लिखिए।
 - vii) निम्नलिखित शब्दों में उचित स्थान पर नुक्ता का प्रयोग कीजिए-
(क) अंग्रेज (ख) गैरकानूनी (ग) बदतमीज
 - viii) 'स्तुति' और 'हर्ष' शब्द का विलोम शब्द लिखिए।
 - ix) निम्नलिखित शब्दों के लिंग बदलकर लिखिए-
(क) भवदीय (ख) विदुषी (ग) कवि
2. पक्षियों को पिंजरें में बंद करना उनकी आज़ादी छिनना है। कैसे?
 3. असल धन कहानी के आधार पर बताइए कि दरबारियों के सिर शर्म से क्यों झुके हुए थे?
 4. दोपहरी कविता के शीर्षक की सार्थकता को अपने शब्दों में स्पष्ट कीजिए।
 5. कविता 'दोपहरी' के किस अंश ने आपको प्रभावित किया और क्यों?
 6. पक्षियों के समान अगर मनुष्य को भी पिंजरे में बंद करके सभी सुख-सुविधाएँ दी जाए तो उसकी मनोदशा क्या होगी? 35-40 शब्दों में लिखिए।



रचनात्मक प्रश्न

7. चुनाव के कारण आपके घर की दीवारें नारे लिखने और पोस्टर चिपकाने से गंदी हो गई हैं? इस समस्या की ओर ध्यान आकृष्ट करते हुए प्रभात खबर के संपादक को पत्र लिखिए।

अथवा

अच्छे पड़ोसी की आवश्यकता विषय पर लगभग 120 शब्दों में अनुच्छेद लिखिए -

संकेत बिंदु- पास-पड़ोस का महत्व- अच्छे पड़ोसी कैसे बने- पड़ोस का महत्व- अच्छे पड़ोसी की कमी से उत्पन्न कठिनाइयाँ- पड़ोसी से सद्व्यवहार

परियोजना कार्य

- क. विलुप्त होने की कगार में हैं ऐसे किन्हीं पाँच पक्षियों के नाम लिखकर चित्र के साथ उनके विलुप्ति का कारण एवं संरक्षण के उपाय का वर्णन कीजिए।

SUBJECT : BENGALI

১) মন্তব্যঃ কতিপয় পদ গমন করিলে শকুন্তলার গতিভঙ্গ হইল।

যুক্তি ঃ একটি মাতৃহীন হরিণ শিশু তাহার অঞ্চল ধরিয়া টানিতেছে।

- i) মন্তব্য, যুক্তি উভয় শুদ্ধ ii) মন্তব্য শুদ্ধ, যুক্তি অশুদ্ধ
iii) মন্তব্য অশুদ্ধ, যুক্তি শুদ্ধ iv) মন্তব্য, যুক্তি উভয় অশুদ্ধ



২) অভিজ্ঞান শকুন্তলম একটি –

- i) উপন্যাস ii) ছোটগল্প iii) নাটক iv) প্রবন্ধ

৩) মন্তব্য (ক) ঃ আমরা বনবাসী বটে, কিন্তু লৌকিক ব্যাপারে নিতান্ত অভিজ্ঞ নয়।

মন্তব্য (খ) পরিচারিণীদের সঙ্গে প্রিয় সখীর ন্যায় ব্যবহার করিব।

- i) মন্তব্য (ক) ঠিক মন্তব্য (খ) ভুল ii) মন্তব্য (ক) ও মন্তব্য (খ) উভয় ভুল
iii) মন্তব্য (ক) ভুল মন্তব্য (খ) ঠিক iv) মন্তব্য (ক) ও মন্তব্য (খ) উভয় ঠিক



৪) অনন্দার আত্মপরিচয় পদাংশটি কোন মঙ্গল কাব্যের অন্তর্গত ?

- i) মনসা মঙ্গল ii) চণ্ডী মঙ্গল iii) অনন্দা মঙ্গল iv) ধর্ম মঙ্গল

৫) দেবী অন্নপূর্ণা হরিহোড়ের বাড়ি ছেড়েছিলেন কেন ?

- i) অর্থের অভাবে ii) সপত্নী কলহে iii) পূজা পাওয়ার জন্য iv) দেবীর মাহাত্ম্য প্রচারের জন্য

৬) মা শিশুকে চাঁদ দেখাচ্ছেন—এখানে 'দেখাচ্ছেন' কোন ক্রিয়া পদের উদাহরণ ?

- i) নামধাতুজ ক্রিয়া ii) যৌগিক ক্রিয়া iii) সংযোগমূলক ক্রিয়া iv) প্রযোজক ক্রিয়া

৭) মন্তব্য (ক) ঃ বাক্যে অর্থের প্রকাশের দিক দিয়ে ক্রিয়া কে দুই ভাগে ভাগ করা যায়।

মন্তব্য (খ) ঃ ভাগ গুলি হল সমাপিকা ক্রিয়া, অসমাপিকা ক্রিয়া।

- i) মন্তব্য (ক) ঠিক (খ) ভুল ii) মন্তব্য (ক) ও মন্তব্য (খ) দুটি ঠিক

iii) মন্তব্য (ক) ভুল মন্তব্য (খ) ঠিক iv) মন্তব্য (ক) ও মন্তব্য (খ) দুটি ভুল

৮) ধাতুকে কয়টি ভাগে ভাগ করা যায় ?

i) দুটি ii) চারটি iii) পাঁচটি iv) তিনটি

৯) মন্তব্য (ক) ঃ শব্দের সাথে " আ" প্রত্যয় যোগে গঠিত ধাতুকে নামধাতু বলে।

মন্তব্য (খ) ঃ যে ধাতুকে আর ভাঙা যায় না,তাকে মৌলিক ধাতু বলে।

i) মন্তব্য (ক) ও (খ) দুটি ভুল ii) মন্তব্য (ক) ভুল মন্তব্য (খ) ঠিক

iii) মন্তব্য (ক) ও মন্তব্য (খ) দুটি ঠিক iv) মন্তব্য (ক) ঠিক ও মন্তব্য (খ) ভুল

১০) ক্রিয়া পদকে বাক্যের ----- বলে।

i) আত্মা ii) দেহ iii) মেরুদণ্ড iv) মাথা

নীচের প্রশ্নগুলির উত্তর দাও –

১১) নীরব প্রকৃতি এবং জীবদের সঙ্গে মানুষের যে নিবিড় সম্পর্ক গড়ে উঠার উদাহরণ আমরা শকুন্তলার পতিগৃহে যাত্রা – রচনাংশে দেখতে পাই তা আলোচনা কর।

১২) অন্নপূর্ণা কিভাবে দুটি অর্থের মাধ্যমে ঈশ্বরীকে পরিচয় দান করেন তা বুঝিয়ে দাও।

১৩) "লালু" গল্পে লালুর সাহসিকতার যে পরিচয় পাও তা বর্ণনা কর।

১৪) শূন্যস্থান পূর্ণ কর –

ক) ধাতুর সঙ্গে যে অর্থহীন অক্ষর বা অক্ষরসমষ্টি যুক্ত হয়,তাকে বলে -----।

খ) রাজা রামমোহন রায় ক্রিয়াপদকে ----- নামে অভিহিত করেছেন।

গ) কোমরটা ব্যথায় ----- উঠল।(টনটন/ টকটক)

ঘ) বাংলা ভাষায় ধাতুর সংখ্যা -----।

ঙ) কর্তার কাজের প্রভাব পরে ----- উপর।

১৫) ঠিক ভুল নির্ণয় কর –

ক) ক্রিয়াপদকে কাকে দিয়ে প্রশ্ন করলে গৌন কর্ম পাওয়া যায়।

খ) একটি বাক্যে অসমাপিকা ক্রিয়া একটি থাকবেই,সমাপিকা ক্রিয়া নাও থাকতে পারে।

গ) ক্রিয়াপদের মৌলিক রূপটি হল ধাতু।

ঘ) ছেলোটিকে ঘুম ঘুমিয়েছে – এটি সমধাতুজ কর্মের উদাহরণ।



১৬) অনুচ্ছেদ লেখ- বিদ্যালয়ে তোমার প্রথম দিনের স্মৃতি।

প্রকল্প ঃ ক্রিয়াপদের বিভিন্ন ভাগগুলি সুন্দর ভাবে চার্ট পেপারে লিখবে।

ধাতু			
করে= কর্+এ			
সংস্কৃত ধাতু	সাধিত পদ	বাংলা ধাতু	সাধিত পদ
কৃ	কৃত, কর্তব্য	কর	করা, করে

Subject - SANSKRIT

१. मञ्जुषायां प्रदत्तपदैः रिक्तस्थानानि पूरयन्तु -

1. सर्वे सुखिनः _____।
2. अधमाः धनम् _____।
3. सत्सङ्गतिः पुंसां किं न _____?
4. लक्ष्मीः यथेष्टं _____।
5. सन्मित्रं गुणान् _____।

(गच्छतु , इच्छन्ति , प्रकटयति , भवन्तु , करोति)

२. मञ्जुषायाः उचितम् अर्थं चित्वा लिखन्तु -

1. चेतः _____।
2. निरामयाः _____।
3. वाचि _____।
4. धीराः _____।
5. सन्तः _____।

(रोगरहिताः , धैर्यवन्तः , सज्जनाः , वाण्याम् , हृदयम्)

३. एतेषां प्रश्नानाम् उत्तराणि एकपदेन लिखन्तु -

1. सन्मित्रं कस्मात् निवारयति ? _____
2. के निन्दन्तु यदि वा स्तुवन्तु ? _____
3. का पापम् अपाकरोति ? _____
4. अधमा कीदृशाः सन्तु ? _____

४. मञ्जूषातः उचितानि अव्ययपदानि चित्वा रिक्तं स्थानानि पूरयन् तु -

1. ईश्वरः _____ अस्ति।
2. छात्राः कक्षायाः _____ न भ्रमेयुः।
3. _____ असत्यवादिनम्।
4. कुक्कुराः मार्गेषु _____ भ्रमन्ति।
5. त्वम् _____ मम प्रियं मित्रम्।
6. _____ विवादेन।

(अपि , अलम् , धिक् , सर्वत्र , बहिः , इतस्ततः)

५. एतेषां प्रश्नानाम् उत्तराणि पूर्णवाक्येन लिखन्तु -

1. सुन्दरं गृहं दृष्ट्वा काकः चटका च किम् अचिन्तयताम् ?

2. चटका काकस्य गृहं गत्वा किं कथयति ?

3. अभिमानी काकः चटकां किम् अकथयत् ?

4. काकः लज्जितः भूत्वा किं चिन्तयति ?

5. वर्षाकालात् अनन्तरं किम् अभवत् ?

६. मञ्जूषायाः उचितं विशेष्यपदं चित्वा लिखन्तु -

1. भीषणे _____
2. अभिमानी _____
3. खिन्ना _____
4. नवीनम् _____
5. एकस्मिन् _____

(काकः , गृहम् , चटका , वृक्षे , ग्रीष्मकाले)

७. अधोलिखितवाक्येषु कोष्ठकेषु प्रदत्तानि पदानि योजयित्वा वाक्यानि पुनः लिखन्तु -

1. छात्रः विषयम् (अव + गच्छति) । _____
2. राजा आसनम् (अधि + आस्ते) । _____
3. सज्जनाः सदैव जनान् (उप + कुर्वन्ति) । _____
4. अम्बा बालाय दुग्धम् (आ + नयति) । _____
5. पिता फलानि (आ + नयति) । _____

८. अधोलिखितवाक्येषु उपसर्गयुक्तानि पदानि रेखाङ्कितानि कृत्वा उपसर्गान् पृथक् कृत्वा लिखन्तु -

1. छात्रः आपणात् पुस्तकानि आनयति। _____
2. शिष्यः गुरुम् अनुवदति। _____
3. अहम् अवगच्छामि। _____
4. सज्जनः सदैव उपकरोति। _____
5. विनीतः प्रातः पञ्चवादने उत्तिष्ठति। _____

९. 'किम्' शब्दस्य उचितरूपैः रिक्तस्थानानि पूरयन्तु -

1. _____ माला ?
2. _____ लेखनी ?
3. _____ पुष्पे ?
4. _____ पुष्पेषु ?
5. _____ बालकात् ?
6. _____ अजा ?

१०. पाठ्यपुस्तकात् वसुधैव कुटुम्बकम् इति पाठं दृष्ट्वा पञ्च पृष्ठे सुलेखम् लिखन्तु -

SUBJECT - MATHEMATICS

SECTION –A

1. _____ is the square of 25.
a) 625 b) 525 c) 125 d) 655
2. . Which of the following is not a triangular number?
a) 1 b) 10 c) 15 d) 20
3. Which of the following is a triangular number?
a) 2 b) 4 c) 5 d) 6
4. Which of the following is the cube root of 4913?
a) 23 b) 13 c) 17 d) 2
5. What is the one's digit in the cube root of 2744 ?
a) 1 b) 2 c) 5 d) 4

SECTION -B

1. Find the square of 18 and the square root of 625.
2. Which number is a perfect square: 144 or 150? Also find its square root.
3. Is 343 a perfect cube? What is its cube root? Also, find the cube of 5

SECTION – C

1. Find the square root of 1764 using prime factorization. Also verify your answer by squaring the result
2. Expand and simplify $(2x+5y)^2$

SECTION – D

Ravi is helping his father build a small cube-shaped storage box. The volume of the box is 729 cubic centimeters. He wants to paint all six faces of the cube and needs to calculate the surface area.

Based on the case above, answer the following questions:

1. What is the side length of the cube?
2. What is the total surface area of the cube?
3. Is 729 a perfect cube? Justify your answer.
4. If Ravi wants to build another cube-shaped box with twice the volume, what would be the side length of the new box?

SECTION-E

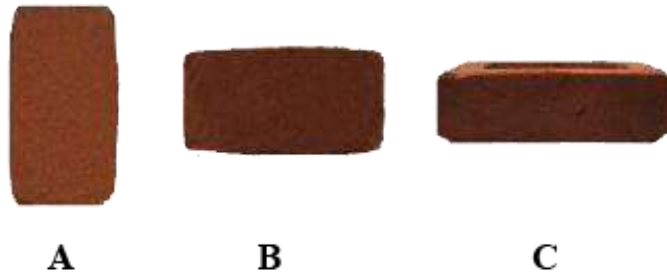
1. Find cube from 1 to 10 (Project work)

SUBJECT: SCIENCE

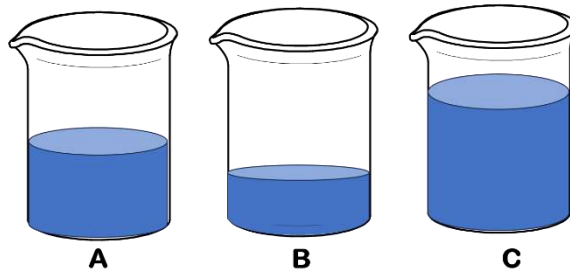
SECTION- A (PHYSICS)

Select the correct option:

1. A brick is kept in three different ways on a table as shown below. The pressure exerted by the brick on the table will be

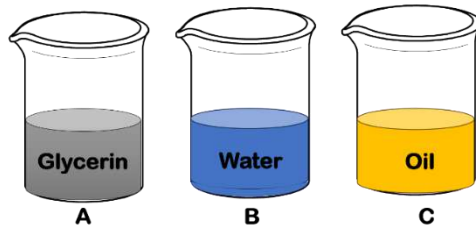


- (a) maximum in position A (b) maximum in position B
- (c) maximum in position C (d) equal in all cases
2. Three containers of same sizes contain different amount of water as shown in figure. If we arrange the containers based on decreasing hydraulic pressure at the bottom of containers, the correct order is



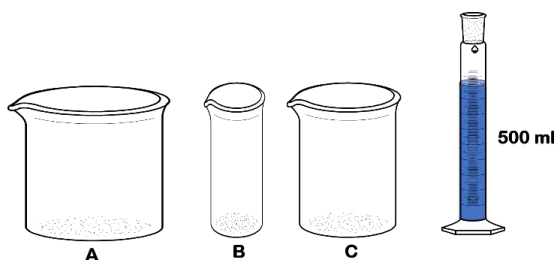
- (a) $C > B > A$ (b) $B > C > A$ (c) $A > C > B$ (d) $C > A > B$

3. Three containers of same sizes contain different liquids of same volume as shown in figure. If we arrange the containers based on decreasing hydraulic pressure at the bottom of containers, the correct order is



- (a) $A > B > C$ (b) $B > C > A$ (c) $C > A > B$ (d) $C > B > A$

4. There are three containers of different sizes as shown in figure. If we pour 500 ml of water to each container the correct sequence of the containers, based on decreasing hydraulic pressure at the bottom of containers, is



- (a) $A > B > C$ (b) $B > C > A$ (c) $C > A > B$ (d) $C > B > A$

➤ **Answer the following short answer type questions:**

5. Two persons are applying forces on two opposite sides of a moving cart. The cart still moves with the same speed in the same direction. What do you infer about the magnitudes and direction of the forces applied?



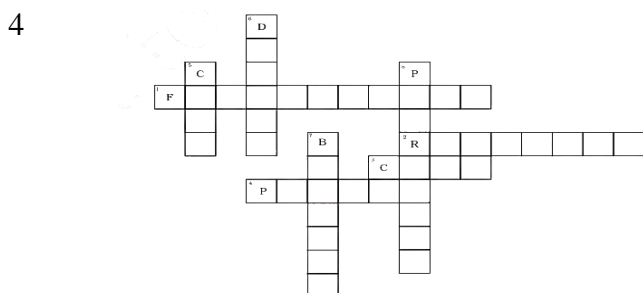
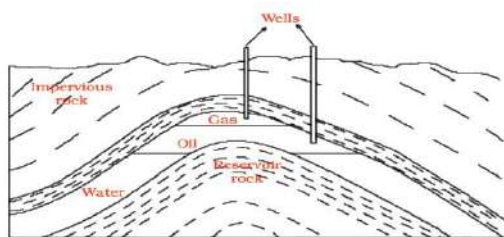
6. In a game of tug of war two situations are described by this figure. Find the net force and direction of movement of the rope for each situation.



ACTIVITY: Perform an activity to show the dependence of liquid pressure on depth. Note the details about the activity down in your SCIENCE ACTIVITY COPY.

SECTION – B (CHEMISTRY)

1. A poisonous gas is produced by burning wood in insufficient air. Identify the gas
a) CO_2 b) H_2O c) CO d) SO_2
2. Assertion (A): Coal, petroleum and natural gas can be prepared in the laboratory from dead organisms.
Reason (R): They cannot be prepared in laboratory as their formation is a very slow process and conditions for their formation cannot be created in the laboratory.
3. Look at the given diagram. Why do we find the oil layer above the water layer?



Complete the above puzzle with the help of following hints.

Across

1. Fuels obtained from dead remains of living organisms. (6,5)
2. A process by which the various constituents of petroleum are separated. (8)
3. A porous black substance obtained from coal. (4)
4. Another name for motor fuel. (6)

Down

5. The substance obtained by carbonisation. (4)
6. Fuel for heavy motor vehicles. (6)
7. A petroleum product used for road surfacing. (7)
8. Dead remains of sea animals got converted into it. (9)

- 5 The material X is a fossil fuel. It is formed from the buried large land plants by a very slow process Y. When X is heated in the absence of air, i.e. in the process called Z, it gives three products A, B, & C. A is used as a reducing agent in the extraction of metals, B is used as an industrial fuel, 5 whereas the product C has been traditionally used for metaling the roads. It is now replaced by a petroleum product, bitumen.

Now give the answer of the following questions.

- What is the material X?
- What is the physical state & colour of X?
- Name the processes Y & Z.
- What are the products A, B & C?

Activity:

Model making by using cardboard on renewable energy sources.

SECTION - C (Biology)

- Identify the correct statement about cells.
 - All the cells have nucleoid
 - Cells arise from pre existing cells.
 - All cells are microscopic in nature
 - Shape of all types of cells are round.
- Both A and R are true and R is correct explanation of A
 - Both A and R are true and R is not the correct explanation of A
 - A is true and R is false
 - A is false and R is true.

Assertion (A): Mitochondria is called as powerhouse of the cell.

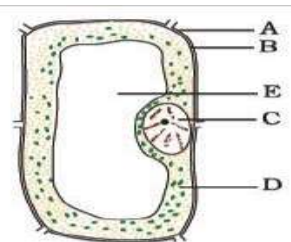
Reason (R): It controls entry and exit of all the substances as per the requirements of the cell.

- Differentiate between cell wall and cell membrane (any 2 points).
- Where are chromosomes found in the cell? State their functions.

5. **Source based question**

Label the parts in the given diagram.

- Identify the part which controls the entry and exit of cellular substances.
- Mention the part which keeps the cell rigid.
- Identify the part which is considered as the brain of cell and state one function of it.



SUBJECT-SOCIAL SCIENCE

1. Write three characteristics about the Ryotwari System.
2. Name any two British documents that tell us about condition of the British administration in India.

3. Source Based Question:

The British passed the Vernacular Press Act in 1878 to repress the anti- government writings and propaganda. The Indian newspapers that worried the British government were Somprakash, Sulabh Samachar, Amrit Bazar Patrika, Bharat Mihir etc. Few books said us about the British administration, like 'Anandmath' by Bankim Chandra Chattopadhyay, 'My Experience With Truth' by Mahatma Gandhi, 'Unhappy Indian' by Lala Lajpat Rai etc.

- a. Why British passed Vernacular Press Act?
 - b. Who was the author of the book 'My Experience with Truth'?
4. "Many tribals had to move to other areas in search of livelihood". Explain how tribal society were affected by the British rule?
5. State the differences between Unitary State and Federal State. (any 3 points)
6. "India has an independent judiciary, free from the influence of the executive and the Legislature". Discuss the statement on the behalf of the Indian Constitution. (any 3 points)
7. Differentiate between natural resources and man made resources.
8. A village near a river is planning to build a dam. What could be the positive and negative effects on land and water resources? Should they proceed with the project?
9. Mention the ways to achieve sustainable development.
10. "Topographical variations affect the thickness of soil formation" - Justify this statement along with suitable examples.

Activity :

Provisions of the Indian Constitution which are inspired from foreign constitutions- make an info graphic presentation.

Map Based Work:

On a political map of World locate & label the following:

- i) One region of high rainfall in South America
- ii) One region of low rainfall in Eastern Australia
- iii) Sahara Desert
- iv) Kalahari Desert

SUBJECT: MORAL EDUCATION

1. Write down the ten Principles of Arya Samaj. (Refer to page 132)

2. *"Om vishwani deva savitar duritani parasuva*

Yad bhadram tanna asuva"

Write down the English meaning of the above given Mantra.

3. What happens when the herbs added to the havan fire mix with the air?

4. What was Gabby's real name? Does she live up to the meaning of her name by the end of the story?

5. Why is it important to choose the right words and think before speaking?