

**DAV PUBLIC SCHOOL, DVC, MTPS**  
**HOLIDAY HOMEWORK ASSIGNMENT**

**SESSION 2024 - 25**

**Class :- VII**

**SUBJECT:- ENGLISH**

1. Answer the following questions in about 30 - 40 words :

- a) Why did the little bird prefer the ivy vine to the velvet bed ?
- b) “Aunt Ruby won my admiration.....” “ Why did Aunt Ruby win the narrator's admiration?
- c- The small bird, birdie, convey a vital message to all of us. – Discuss.

2. Imagine yourself Rakesh / Ridhi. Recently you have lost the post of head boy /head girl in the Students council election. You are distressed and scared of how to face the winning candidate. But your House master’s positive word “ Failure is the part of the process of success motivated you a lot to work hard for your future battles. Taking ideas from the unit 'People at work' of your English reader book and write a diary entry expressing your feeling in about 100 - 120 words.

3. Do as directed :-

- a. \_\_\_\_\_! That was an incredible performance. ( Insert suitable word to form an Exclamatory sentence)
- b. This book is interesting. ( Change into Exclamatory sentence)
- c . I was looking my phone. ( Change into Interrogative sentence)
- d .Ouch who is it (Rewrite the sentence with proper punctuation mark)

4. Prepare an Album on different types of birds found in West Bengal and Ladakh and write a self- composed poem on birds providing a suitable title.

**D.A.V. PUBLIC SCHOOL, DVC, MTPS**

**HOLIDAY HOMEWORK**

**SESSION : 2024-2025**

**CLASS : VII**

**SUBJECT : BENGAL**

সঠিক বিকল্পটি নির্বাচন করে লেখো :

১। নিচে প্রদত্ত বিকল্পগুলির শুদ্ধাশুদ্ধ নির্ণয় কর-

ক) গিজন্ত শব্দটি সন্ধিবদ্ধ হয়েছে চ্ + অ = জ - সূত্রানুযায়ী।

খ) 'শরদিন্দু' শব্দটি সন্ধিবদ্ধ হয়েছে ত্ + ই = দ - সূত্রানুযায়ী।

গ) 'বাগাড়ম্বর' শব্দটি সন্ধিবদ্ধ হয়েছে গ্ + আ = গ সূত্রানুযায়ী।

অ) ক) শুদ্ধ খ) অশুদ্ধ গ) শুদ্ধ

আ) ক) অশুদ্ধ খ) শুদ্ধ গ) অশুদ্ধ

ই) ক) শুদ্ধ খ) শুদ্ধ গ) অশুদ্ধ

ঈ) ক) অশুদ্ধ, খ) অশুদ্ধ গ) শুদ্ধ

২। প্রাগৈতিহাসিক সময় থেকে মানুষ নতুন নতুন রহস্য উন্মোচন করে উন্নয়নের পথে এগিয়ে চলেছে। - বাক্যটিতে কতগুলি সন্ধিবদ্ধ শব্দ রয়েছে ?

অ) ২ টি

আ) ৩ টি

ই) ৪ টি

ঈ) ৫ টি

৩। কোনটি সন্ধিজাত শব্দ নয়?

অ) তৃষ্ণার্ঘ

আ) বিচ্ছিন্ন

ই) উচ্চারণ

ঈ) রাজহংস

৪। রাজহংস গুলিকে তুলনা করা হয়েছে \_\_\_\_\_ এর সাথে।

অ) চেউয়ের

আ) মেঘের

ই) আকাশের

ঈ) উদ্যানের

৫। শাক্য রাজকুমারের মধ্যে প্রকাশিত গুণগুলি হল-

অ) ত্যাগ

আ) দয়া

ই) পরদুঃখকাতরতা

ঈ) সবকটি ঠিক

৬। 'কুমার নহে----মূর্তি করুণার' - এখানে কুমার হল-

অ) দেবদত্ত

আ) সিদ্ধার্থ

ই) দেবকুমার

ঈ) দেবরাজ

৭। দুই গ্রামের সীমারেখায় কী দণ্ডায়মান ছিল?

অ) আমগাছ

আ) পারিজাত বৃক্ষ

ই) বটবৃক্ষ

ঈ) ছাতিম গাছ

৮। বয়স ত্রিশের খর্বকায়, কৃষ্ণকায়, মিষ্টভাষী ব্যক্তিটি হলেন-

অ) হারান চক্রবর্তী

আ) ব্রজগোপাল মিত্র

ই) মাধব

ঈ) চিনিবাস

৯। গ্রামের অভিভাবক স্থানীয় কায়স্থ সন্তান হলেন-

অ) রামচরণ

আ) হীরালাল দাসদত্ত

ই) হারান

ঈ) ব্রজ মিত্র

১০। 'বিদ্বজ্জন' শব্দটির সন্ধি বিচ্ছেদ হবে-

অ) বিদ্ব + জন

আ) বিদ্বৎ + জন

ই) বিদ্বৎ + জন

ঈ) বিদ্বৎ + জন

**প্রকল্প**

১১। ব্যঞ্জনসন্ধি ১ থেকে ৮ পর্যন্ত সূত্রগুলি সুন্দরভাবে উপস্থাপন করবে (A4 Size Chart Paper)।

DAV PUBLIC SCHOOL, DVC, MTPS

SESSION 2024 - 25

HOLIDAY HOMEWORK ASSIGNMENT

Class :- VII

SUBJECT:HINDI

1. उचित स्थान पर अनुस्वार एवं अनुनासिक का प्रयोग कीजिए-

- i) सदेश    ii) छाटना    iii) ठडी    iv) बिदू  
v) कटीली    vi) अत्यत    vii) हसना    viii) पाच

2. अनुस्वार अथवा अनुनासिक के प्रयोग से शब्दों के अर्थ में आए अंतर को वाक्य प्रयोग द्वारा स्पष्ट कीजिए-  
आधी, आँधी

3. निम्नलिखित मुहावरों के अर्थ लिखकर उनका वाक्य में प्रयोग कीजिए-

- i) आँख दिखाना    ii) गले का हार

4. निम्नलिखित शब्दों से भाववाचक संज्ञा बनाकर लिखिए-

- i) बूढ़ा    ii) मानव

5. निम्नलिखित वाक्यांशों के लिए एक शब्द लिखिए-

- i) जो संभव न हो.    ii) जिसकी गहराई की थाह ना लग सके  
iii) बिना वेतन के काम करने वाला    iv) जो अल्प जानता हो

6. कविता की जिन पंक्तियों से पता चलता है कि सूरज और चांद नजर नहीं आते उन्हें लिखिए।

7. महीनों के बदलते क्रम से यह अहसास होता है कि परिवर्तन ही प्रकृति का नियम है। कैसे ?

8. जब सयाल ने निर्मला को भाग जाने के लिए कहा तब निर्मला सयाल के बारे में क्या सोच रही थी ?

9. यदि आप निर्मला की तरह किसी मुसीबत में फँस जाएँगे तो आप क्या करेंगे ?

10. बिगड़ते नाटक को देखकर अगर राकेश मंच पर ना पहुँचता तो क्या होता ? अपने विचार लिखिए।

गतिविधि

\*सच्ची संगति पर पाँच दोहों का संकलन कर 1/4 साइज चार्ट पेपर पर लिखिए।

\*पूरी गतिविधि को अपनी पसंद के अनुसार सजा कर आकर्षक बनाइए।



Edit with WPS Office

**D.A.V PUBLIC SCHOOL, DVC, MTPS**

**SESSION: 2024-25**

**HOLIDAY HOMEWORK**

**CLASS-VII**

**SUBJECT-SANSKRIT**

1 प्रदत्तेभ्यः विकल्पेभ्यः उचितं विकल्पं चित्वा प्रश्नानाम् उत्तराणि लिखत-

क) सर्वाणि कार्याणि कया एव सिध्यन्ति?

अ) बुद्धिः                      आ) बुद्ध्या                      इ) बलेन

ख) बालः कुत्र घटस्य अधः गर्तम् अपश्यत्?

अ) मार्गे                      आ) कूपे                      इ) गृहे

ग) शृगालः कदा गुहां प्रति आगच्छत्?

अ) प्रातःकाले                      आ) सायंकाले                      इ) रात्रौ

घ) बालः \_\_\_\_\_ बुद्धिमान् अभवत्।

अ) शीघ्रम्                      आ) शनैः शनैः                      इ) कश्चित्

ङ) पशूनाम् सङ्ख्या न्यूनतरा अभवत्।

अ) कस्य                      आ) कस्मात्                      इ) केषाम्

च) घटस्थापनेन पाषाणशिलायां गर्तः अभवत्।

अ) कस्मिन्                      आ) कस्याम्                      इ) कासाम्

छ) 'अभ्यासः एव अस्ति परमः गुरुः' - अत्र 'परमः' इति विशेषणस्य कर्तृपदं किम्?

अ) अभ्यासः                      आ) गुरुः                      इ) एव

ज) सहपाठिनः उपहासं कुर्वन्ति स्म।

अ) उ+पहासं                      आ) उपा+हासं                      इ) उप+हासं

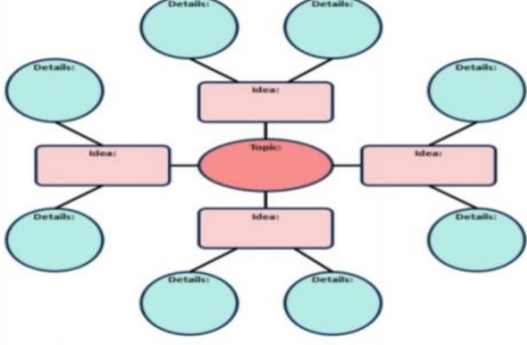
झ) खगः आकाशे उत्पतति ।

अ) उत्+पतति                      आ) उत+पतति                      इ) उत्प+ततः

ञ) 'अपृच्छत्' इति क्रियापदे धातुः कः अस्ति?

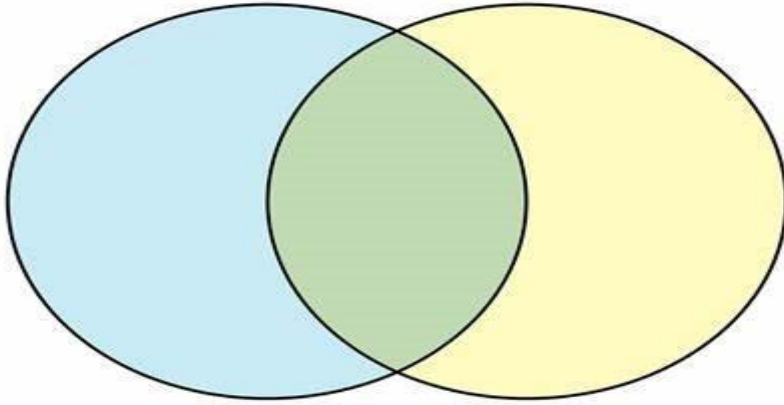
अ) पृच्छ आ) प्रच्छ इ) प्रिच्छ

2. उपसर्गयुक्तानि पदानि अधिकृत्य पुष्पारेखस्य निर्माणं कुरुत-



3. 'बुद्धिः एव अस्माकं बलम्' एतस्य पाठस्य आधारेण सिंहः शृगालः अनयोः मध्ये का समानता अस्ति का च भिन्नता अस्ति वेनारेखमाध्यमेन दर्शयन्तु।

वेन-आरेख



DAV PUBLIC SCHOOL, DVC, MTPS, BANKURA

**HOLIDAY HOME WORK**

**CLASS: VII (MATHEMATICS)**

1. Rewrite  $-44/72$  in the simplest form.  
(a)  $-18/11$             (b)  $-11/18$             (c)  $-11/19$             (d)  $-11/20$
2. The reciprocal of  $-5$  is \_\_\_\_\_  
(a) 5            (b)  $-5$             (c)  $-1/5$             (d) None of these
3. The product of two numbers is  $-20/9$ . If one of the numbers is 4, find the other.  
(a)  $-5/9$             (b)  $3/11$             (c)  $12/39$             (d)  $-9/11$
4. Write the rational number whose numerator is  $4 \times (-7)$  and denominator is  $(3 - 7) \times (15 - 11)$ .  
(a)  $16/28$             (b)  $8/13$             (c)  $13/8$             (d)  $28/16$
5. Which of the following pairs represent the same rational number?  
(a)  $-7/21$  and  $1/3$             (b)  $1/3$  and  $-1/9$             (c)  $-5/-9$  and  $5/-9$   
(d)  $8/-5$  and  $-24/15$
6. Which of the following is not a rational number(s)?  
(a)  $-2/9$             (b)  $4/-7$             (c)  $-3/-17$             (d)  $\sqrt{2/3}$
7. The numbers \_\_\_\_\_ and \_\_\_\_\_ are their own reciprocals.  
(a)  $-1$  and  $0$             (b)  $1$  and  $0$             (c)  $1$  and  $-1$             (d) None of these
- 8) What number should be added to  $(7/12)$  to get  $(4/15)$  ?  
(a)  $-19/60$             (b)  $-19$             (c)  $1/2$             (d) None of these
- 9) What is the average of the two middle rational numbers if  $4/7, 1/3, 2/5$  and  $5/9$  are arranged in ascending order?  
(a)  $80/90$             (b)  $86/45$             (c)  $43/45$             (d)  $43/90$
- 10) Which is the correct descending order of  $-2, 4/-5, -11/20, 3/4$ ?  
(a)  $3/4 > -2 > -11/20 > 4/-5$   
(b)  $3/4 > -11/20 > -4/5 > -2$   
(c)  $3/4 > 4/-5 > -2 > -11/20$   
(d)  $3/4 > 4/-5 > -11/20 > -2$

**DAV PUBLIC SCHOOL, DVC, MTPS**  
**SUMMER HOLIDAY HOMEWORK**

**CLASS: VII**

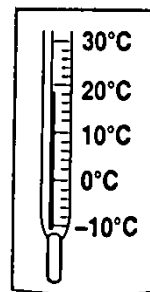
**SUBJECT: Science**

---

**NOTE:-** This question paper contains three sections. Section- A (Physics), Section –B (Chemistry) and Section –C (Biology). **Solve each section in separate copy.**

**SECTION -A (Physics)**

1. The thermometer shown in the figure is
  - a) Clinical thermometer
  - b) Digital thermometer
  - c) Laboratory thermometer
  - d) Fahrenheit thermometer
2. The reading of the thermometer shown in the figure is
  - a) 20°C
  - b) 19°C
  - c) 15°C
  - d) 18°C



**Directions:** Q. no 3 and 4 are Assertion - Reasoning based questions.

These questions below consist of an Assertion and a Reason. Use the following key to choose the appropriate answer.

- (a) Both A and R are true and R is the correct explanation of A.
- (b) Both A and R are true but R is not the correct explanation of A.
- (c) A is true but R is false.
- (d) A is false but R is true.

3. **Assertion:** A kink is present in the capillary tube in all types of thermometers.

**Reason:** The kink ensures that the mercury level does not fall back instantly after the thermometer is removed from the hot body.

4. **Assertion:** Heat can never flow from cold body to a hot body

**Reason:** Rise in temperature is one of the effects of heating any substance.

5. **Read the passage and answer the following questions**

A student of class VII standard, Nabin Bose is doing an activity on heat with the help of his Science teacher. According to the instruction of his teacher, Nabin first took a metal container partially filled with water and then started heating it using a bunsen burner. During heating he dropped few mustard seeds inside the water and observed their vertical circulation inside the water during the heating process. In the set up Nabin also fixed a lab thermometer to check the reading of the temperature of water during heating. When the water starts boiling he finds that the mercury level is touching the 100°C mark. Then he extinguished the burner and left the water in the container for cooling. He observed that during cooling there was no movement of the mustard seeds like he had observed during heating.

Choose the correct option from the following questions:

- i) The modes of heat transfer involved during the heating of the metal container containing water are
  - a) Conduction and Radiation
  - b) Conduction and Convection
  - c) Convection and Radiation
  - d) Conduction, Convection and Radiation



ii) The mode/modes of heat transfer involved during the cooling of the metal container containing water is/are

- a) Conduction and Radiation
- b) Conduction and Convection
- c) Convection and Radiation
- d) Only Radiation

iii) The range of the thermometer Nabin used during the activity is

- a)  $-10^{\circ}\text{C}$  to  $100^{\circ}\text{C}$
- b)  $-10^{\circ}\text{C}$  to  $100^{\circ}\text{C}$
- c)  $-10^{\circ}\text{C}$  to  $110^{\circ}\text{C}$
- d)  $0^{\circ}\text{C}$  to  $100^{\circ}\text{C}$

iv) Mercury is used as thermometric liquid because

- a) It has shiny appearance.
- b) It does not wet the wall of the tube.
- c) It shows uniform expansion on heating.
- d) All of these.

### Section -B (Chemistry)

MCQ type questions. Select and write one most appropriate option out of the four options given for each of the questions 1 and 2

1. The symbol of lead is

- (a) Ld
- (b) Lb
- (c) Pb
- (d) Pd

2. The formula of Magnesium carbonate is

- (a)  $\text{MgCO}_3$
- (b)  $\text{Mg}_2\text{CO}_3$
- (c)  $\text{Mg}_3\text{CO}_3$
- (d)  $\text{Mg}(\text{CO}_3)_2$

**Directions:** Q. no 3 and 4 are Assertion - Reasoning based questions.

These questions below consist of an Assertion and a Reason. Use the following key to choose the appropriate answer.

- (a) Both A and R are true and R is the correct explanation of A.
- (b) Both A and R are true but R is not the correct explanation of A.
- (c) A is true but R is false.
- (d) A is false but R is true.

3. Assertion: Formation of ammonia is an example of combination reaction.

Reason: Two different gases react here to get the product.

4. Assertion: In the reaction between Magnesium hydroxide and Sulphuric acid one molecule of water is formed.

Reason: It is a neutralisation reaction.

5. **Read the passage given below and answer the following questions:**

A chemical change is one in which changes take place on the molecular level. It produces a new substance whereas a physical change does not produce any new substance. To understand how a physical change occurs, take some sugar crystals and dissolve them in water. The water becomes sweet to taste, which shows that molecules of sugar are present in water. Evaporate the sugar solution in a china dish over a Bunsen burner or a spirit lamp. A white residue is obtained in the china dish. All the properties of this residue are identical to sugar, which was earlier dissolved in water. Thus, we find that in this case no new substance is formed. Hence dissolving of sugar in water is a physical change. Change in state or phase are physical changes such as melting,

freezing, vapourisation, condensation and sublimation. A chemical change results in substance that was not there before.

i. Which of the following change is considered as chemical irreversible change?

- (a) Cutting of wood
- (b) Chopping of wood
- (c) Burning of wood
- (d) Bending of wood.

ii. Freezing is an example of:

- (a) Physical change
- (b) Chemical change
- (c) Both of these
- (d) Irreversible physical change.

iii. Evaporation of sugar solution to obtain sugar is an example of

- (a) Physical change with absorption of heat.
- (b) Chemical change with absorption of heat.
- (c) Physical change with release of heat.
- (d) Chemical change with release of heat.

iv. Identify the physical change /changes from the following:

- (a) Dissolution of salt in water.
- (b) Sublimation of ammonium chloride.
- (c) Formation of rainbow.
- (d) All of these.

#### SECTION -C (Biology)

MCQ type questions:

1. Photosynthesis will not occur in leaves in the absence of

- (a) guard cells
- (b) chlorophyll
- (c) vacuole
- (d) space between cells

2. Yeast, mushroom and bread-mould are

- (a) autotrophic
- (b) insectivorous
- (c) saprophytic
- (d) parasitic

3. Opening and closing of stomata is controlled by

- (a) nucleus
- (b) accessory cells
- (c) stoma
- (d) guard cells

**The question below consists of an assertion and a Reason. Use the following key to choose the appropriate answer.**

- (a) Both A and R are true and R is the correct explanation of A.
- (b) Both A and R are true but R is not the correct explanation of A.
- (c) A is true but R is false.
- (d) A is false but R is true.

4. Assertion (A) : Digestion in amoeba is intracellular.

Reason (R) : They follow holozoic mode of nutrition.

5. Assertion (A) : Water and minerals present in soil are absorbed by roots and transported to leaves.

Reason (R) : Carbon dioxide from air is taken through stomata present on the surface of leaves.

6. Following statements describe the five steps in animal nutrition. Read each statement and give one word for each statement. Write the terms that describe each process.

(a) Transportation of absorbed food to different parts of body and their utilisation.

(b) Breaking of complex food substances into simpler and soluble substances.

(c) Removal of undigested and unabsorbed solid residues of food from the body.

(d) Taking food into the body.

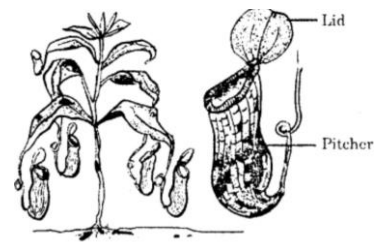
(e) Transport of digested and soluble food from the intestine to blood vessels

Observe the diagram carefully and answer the following questions

a) Identify the type of plant

b) State its mode of nutrition

c) Why do they follow such type of nutrition?



### Activity

**Growth of fungi on a piece of bread showing saprophytic nutrition.**

Q.1 Choose the incorrect statement from the given alternatives.

1

- a) Waterfalls forms at the young stage of the river.
- b) Meander forms at the mature stage of the river.
- c)After meeting the sea , the river becomes large and forms distributaries.
- d) Delta forms at the old stage of the river.

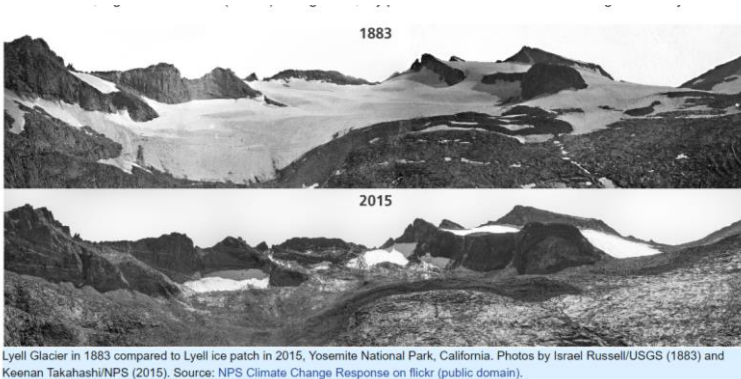
Q.2 Match the following and choose the correct option.

1

| Column -A               | Column -B                  |
|-------------------------|----------------------------|
| A. Agents of gradation  | i)Iron railings get rusted |
| B. Rate of erosion      | ii) Running water          |
| C. Effect of weathering | iii)Volcanic irruption     |
| D. Sudden change        | iv)Temperature of a place  |

- a) A – i ; B – iii ; C – iv ; D - ii
- b) A – ii ; B – iv ; C – i ; D – iii
- c) A – ii ; B – iv ; C – iii ; D – i
- d) A – i ; B – ii ; C – iv ; D - iii

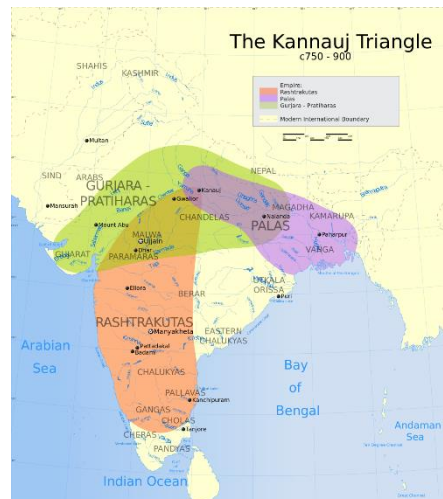
Q. 3



Lyell Glacier in 1883 compared to Lyell ice patch in 2015, Yosemite National Park, California. Photos by Israel Russell/USGS (1883) and Keenan Takahashi/NPS (2015). Source: NPS Climate Change Response on flickr (public domain).

Mention the significance of the above picture.

Q.4 Write down the name of the battle and also mention the place which they tried to possess.



Q. 5 (A) Assertion : Weathering is the breaking up of rocks on the surface of the earth.

(R) Reason : Some of the rocks are carried away by the winds and water and eventually get deposited.

- a) Both (A) and (R) are true but (R) is the correct explanation of (A)
- b) Both (A) and (R) are true but (R) is not the correct explanation of (A)
- c) (A) is true but (R) is false.
- d) (A) is false but (R) is true.

Q.6



Compare the above two pictures according to the period of architecture.

Q.7 Read the given passage carefully and write the answer.

(Conversation between two household workers standing in a queue waiting for their turn to cast their vote)

Manjula : Rita, you have also come to vote !Good! See, Khurana Sahab is also standing behind us to cast his vote. He has just arrived in his car. Isn't great that we are all equal in terms of voting rights and all of us can cast our votes without any fear ,discrimination or pressure !

Rita : True ! Our votes are equally important.

Manjula : Rita , my friend ,whom are you voting for this election?

Rita : I'll vote for the candidate who has built the hospital in our locality and has promised to lay water pipes if gets elected this time.

(After voting)

Rita : Manjula , hurry up ! You have a lot of work .I also have to do a lot of shopping for my boss. So , let us hurry back soon.

Manjula : You are right, Rita . Come, let us go.

Manjula reaches her boss's house and hurriedly does all the household work that is expected of her. She also prepares lunch. Khurana Sahab may return any time after casting his vote. The boss's children are also at home today as the school is closed for election day .

a) Do you think that Manjula is equal in respect of enjoying voting rights to Mr. Khurana ?  
If yes, explain your opinion. 1

b) Mention few promises made by the candidates who stand for election of their constituency. 1

Q.8 Compare the Rashtrakutas and Pratiharas on the basis of linguistic culture. 2

Q. 9 a)Enlist the ways by which Government of India has implemented the provisions of Right to Equality.

b) Mention the importance of reservation after independence . (2+3)

Q.10 a) Give reasons how physical and biological components are interdependent.

b) "Human beings also play a crucial role in changing the face of the land" – Justify . (2+3)

PROJECT WORK :

Write a poem on the topic of Stages of River along with drawing different landforms formed by river- in your scrap book. (INDIVIDUALITY IS PREFERABLE)

MAP WORK : Point out the places in an Indian political map .

- a) Konark temple
- b) Malwa
- c) Bundelkhand
- d) Kannauj
- e) Nalanda University