

DAV PUBLIC SCHOOL, DVC, MTPS

SESSION – 2024 – 2025.

HOLIDAY HOMEWORK ASSIGNMENT

CLASS – IX SUBJECT :- ENGLISH

1. **Answer the following question in about 30 – 40 words:-**
 - a. How did the grandmother make herself independent?
 - b. How does the poet show the ecstasy of the brook whose only aim is to join the brimming river?
 - c. **‘An immature girl who was only twelve, helped her grandmother to read the novel independently’**. What do you think, the narrator was immature or mature enough to help her grandmother?
2. Susie wants to go for a party with her friends but her mother wants her to finish her school assignment. Write a dialogue between them where Susie is trying to convince her mother.
3. **Fill in the blanks with the correct form of verb:-**
 - a. The boss _____ (arrive) before the employees came.
 - b. The minister _____ (announce) his decision by next week.
 - c. I _____ (cook) for my colleagues next Monday.
 - d. As a child, I _____ (swim) regularly, but now I ____ (exercise) daily.
4. You are really excited for the upcoming students council election. After reading the propaganda of all the candidates and seeing their campaign for the different posts. You are confused about who should vote. You want to select the best one. Write a letter to your friend to share your feelings and expectations for a perfect candidate. (100 - 120 words).

हिंदी
ग्रीष्मकालीन अवकाश गृहकार्य
खंड - 'अ'

- 1 निम्नलिखित बहुविकल्पी प्रश्नों के लिए उपयुक्त विकल्प का चयन कर लिखिए-
- i) **स्वचालित** शब्द में निम्नलिखित में से किस उपसर्ग-प्रत्यय का प्रयोग हुआ है?
क) सु उपसर्ग, लित प्रत्यय ख) स्व उपसर्ग, चालित प्रत्यय
ग) सु उपसर्ग, इत प्रत्यय घ) स्व उपसर्ग, इत प्रत्यय
- ii) **नैतिक** शब्द में मूल शब्द क्या है?
क) नेता ख) नीति ग) नैति घ) निति
- iii) **संकल्प** शब्द में प्रयुक्त उपसर्ग है?
क) सं ख) सम ग) स घ) स
- iv) इनमें से किस शब्द में दो प्रत्ययों का प्रयोग हुआ है?
क) नज़रंदाज़ ख) अभिमानी ग) बुद्धिमान घ) खरीददारी
- v) **डाकगाड़ी** शब्द किस समास का उदाहरण है?
क) कर्म तत्पुरुष ख) संबंध तत्पुरुष ग) संप्रदान तत्पुरुष घ) नञ् तत्पुरुष
- vi) द्विगु समास की पहचान के लिए दिए विकल्पों में से उचित विकल्प का चयन कीजिए -
i) पूर्वपद गौण, उत्तरपद प्रधान ।
ii) पूर्वपद प्रधान, उत्तरपद गौण ।
iii) पूर्वपद अव्यय, उत्तरपद संज्ञा ।
iv) पूर्वपद संख्यावाचक विशेषण, उत्तरपद संज्ञा
क) केवल कथन i सही है ।
ख) केवल i व कथन ii सही हैं ।
ग) कथन ii व iii सही हैं।
घ) कथन i व iv सही हैं ।
- vii) **'आमरण'** समस्तपद में उल्लेखित समास के लिए उचित विकल्प का चयन कीजिए-
क) तत्पुरुष ख) अव्ययीभाव ग) कर्मधारय घ) द्विगु

	<p>viii) निम्नलिखित कथन और कारण को पढ़कर सही विकल्प का चयन कीजिए-</p> <p>कथन (अ) - उद्देश्य और विधेय वाक्य के दो अंग हैं । कारण (र) - वाक्य का कर्ता ही उद्देश्य होता है ।</p> <p>विकल्प</p> <p>क) कथन (अ) सही है, किन्तु कारण गलत है । ख) कथन (अ) गलत है, किन्तु कारण (र) सही है । ग) कथन और कारण दोनों सही हैं, क्योंकि कारण कथन की सही व्याख्या करता है । घ) कथन और कारण दोनों सही हैं, परंतु कारण कथन की सही व्याख्या नहीं करता है ।</p>
2	<p>निम्नलिखित प्रश्नों के उत्तर लिखिए -</p> <p>क) मृतप्राय हो चले हीरा-मोती ने अचानक ऐसा क्या देखा कि उनकी दुर्बलता और थकान एकाएक गायब हो गई ? ख) बाड़े के सामने डुग्गी क्यों बज रही थी ? ग) डाँड़े तिब्बत में सबसे खतरे की जगहें क्यों हैं?</p> <p>*****</p>
	<p>परियोजना कार्य</p> <p>लक्षदीप और अंडमान निकोबार दीप समूह की संरचनात्मक जुड़ाव (भाषा, उत्सव, संस्कृति, पर्यटन और अन्य विभागों) की विशेषताओं को उजागर करते हुए परियोजना बनाइए ।</p>

D.A.V. PUBLIC SCHOOL, DVC, MTPS

SESSION : 2024-2025

HOMEWORK FOR SUMMER VACATION

CLASS : IX

SUBJECT : BENGALI

পাঠ্যাংশ থেকে প্রদত্ত প্রশ্ন গুলির সঠিক বিকল্প উত্তরটি বেছে নিয়ে লেখো –

১) " এইটি ফটিকের সবচেয়ে বাজিত " – কোন কথা তার বাজিত ?

ক) তার মামাতো ভাইরা স্কুলে তার পরিচয় দিতে চাইত না

খ) তার মা মাখনকে বেশি ভালোবাসত

গ) মামীর স্নেহহীন চোখে ভালোবাসা না দেখতে পেয়ে

ঘ) স্কুলে পড়া বলতে না পারলে



২) " ফটিক কিছু শশব্যস্ত হইল " – কখন ফটিক শশব্যস্ত হয়েছিল ?

ক) মাখন মাটিতে পড়ে গেলে

খ) বই হারিয়ে ফেলার পর

গ) কলকাতা যাওয়ার সময়

ঘ) পূজার ছুটিতে বাড়ি আসার জন্য



৩) মন্তব্য ঃ তেরো- চৌদ্দ বৎসরের ছেলের মতো পৃথিবীতে এমন বালাই আর নাই।

যুক্তি ঃ কারণ তাহাদের কোন শোভা থাকে না।

ক) মন্তব্য ঠিক যুক্তি ভুল খ) মন্তব্য যুক্তি উভয় ঠিক গ) মন্তব্য ও যুক্তি উভয় ঠিক নয়

ঘ) যুক্তি ঠিক মন্তব্য ভুল

৪) " খেয়া " কবিতায় কোন বিশেষ সময়ের উল্লেখ করা হয়েছে --

ক) সকাল খ) সকাল – সন্ধ্যা গ) বিকাল ঘ) সন্ধ্যা

৫) " পৃথিবীতে কত দ্বন্দ্ব ---" দ্বন্দ্ব " শব্দটির অর্থ কী ?

ক) মিলন খ) ক্ষতি গ) বন্ধুত্ব ঘ) কলহ

৬) মন্তব্য (১) ঃ এই খেয়া চিরদিন চলে নদী স্রোতে

কেহ যায় ঘরে , কেহ আসে ঘর হতে

মন্তব্য (২) ঃ খেয়া কবিতায় জীবনের চিরন্তন সত্য প্রকাশ পেয়েছে

ক) মন্তব্য (১) ঠিক মন্তব্য (২) ভুল খ) মন্তব্য (২) ঠিক মন্তব্য (১) ভুল

গ) মন্তব্য (১) ও মন্তব্য (২) উভয় ঠিক ঘ) মন্তব্য (১) মন্তব্য (২) উভয় ভুল



৭) মন্তব্য (১) ঃ রক্ত প্রবাহের মাঝে ফেনাইয়া উঠে / সোনার মুকুট কত ফুটে আর টুটে

মন্তব্য (২) ঃ উক্তিটিতে সাম্রাজ্যবাদের উত্থান পতনের চিত্র দেখানো হয়েছে

ক) মন্তব্য (১) স্বপক্ষে মন্তব্য (২) ঠিক খ) মন্তব্য (১) স্বপক্ষে (২) ভুল

গ) মন্তব্য (১) ও মন্তব্য (২) উভয় ঠিক ঘ) মন্তব্য (১) ও মন্তব্য (২) উভয় ভুল

৮) সন্ধির প্রধান সুবিধা কি ?

ক) পড়ার সুবিধা খ) লেখার সুবিধা গ) উচ্চারণের সুবিধা ঘ) বোঝার সুবিধা

৯) বিদ্যালয় সন্ধিতে কোন কোন দুটি বর্ণের সন্ধি হয়েছে ?

ক) অ + অ খ) অ + আ গ) আ + আ ঘ) আ + অ

১০) অ -কার কিংবা আ - কারের পর ঋ - কার থাকলে উভয় মিলে কি হয় ?

ক) এর খ) আর গ) র ঘ) অর

প্রকল্প - উদাহরণ সহযোগে স্বরসন্ধির সূত্রগুলি লিপিবদ্ধ করবে।

1 निम्नलिखित-प्रश्नानाम् उत्तराणि पूर्णवाक्येन लिखत-

क) 'अविवेकः परमापदां पदम्' इति कथा कस्मात् ग्रन्थात् गृहीता?

ख) माधवः किमर्थं राजा निमन्त्रितः?

ग) पृथिव्यां त्रीणि रत्नानि कानि सन्ति?

घ) धर्मस्य विभूषणं किम्?

ङ) यस्य तृष्णा विशाला भवति सः कः?

2 निर्देशानुसारम् उत्तरत-

क) 'सः तं व्यापाद्य खण्डशः कृतवान्' - अत्र 'सः' इति सर्वनामपदस्य कर्ता कः?

ख) 'सम्यक् स्थितः' इत्यस्य किं पर्यायपदं 'अविवेकः परमापदां पदम्' इति पाठे प्रयुक्तम्?

ग) 'स्ववालापत्यस्य' - इति पदस्य सन्धिविच्छेदं कृत्वा लिखत अस्मिन् पदे स्वरसन्धेः कः भेदः अस्ति?

3 एकपदेन उत्तरत-

क) मथ्यमानाद् काष्ठात् जायते-	उः
ख) सद्भिः प्रोक्तं अक्षरम्-	उः
ग) परमापदां पदम्-	उः
घ) समृद्धिभिः अनुद्धताः -	उः

4 चित्राणि दृष्ट्वा 'पाथेयम्' इति पाठात् उचित-श्लोकान् चित्वा लिखत-



5 आरेखमाध्यमेन वर्णानाम् उच्चारणस्थानानि A4 इति पृष्ठायां प्रदर्शयन्तु।

DAV PUBLIC SCHOOL, DVC, MTPS
HOLIDAY HOME WQRK 2024-2025

CLASS – IX

SUBJECT – MATHEMATICS

1	In between two rational number there is/are: a) Exactly one rational number b) Infinitely many rational number c) Many irrational numbers d) Only irrational numbers	
2	The product of a rational and an irrational numbers is: a) Always an integer b) Always a rational number c) Always an irrational number d) Sometimes rational and sometimes irrational	
3	The decimal expansion of an irrational number may be: a) Terminating b) Recurring c) Either terminating or non- terminating d) Non-terminating and non-recurring	
4	A rational number between $\sqrt{2}$ and $\sqrt{3}$: a) 1.9	

	<p>b) $(\sqrt{2} \cdot \sqrt{3})/2$</p> <p>c) 1.5</p> <p>d) 1.8</p>	
5	<p>$4\sqrt{5} + 5\sqrt{5}$ is equal to:</p> <p>a) $9\sqrt{5}$</p> <p>b) $9\sqrt{10}$</p> <p>c) $5\sqrt{10}$</p> <p>d) $7\sqrt{5}$</p>	
6	<p>A polynomial with one degree is called:</p> <p>a) Linear polynomial</p> <p>b) Quadratic polynomial</p> <p>c) Monomial</p> <p>d) Binomial</p>	
7	<p>$\sqrt{3}$ is a polynomial of degree:</p> <p>a) 2</p> <p>b) 0</p> <p>c) 1</p> <p>d) $1/2$</p>	
8	<p>Degree of the polynomial $7x^5 + 8x^2 - 5x + 3$ is:</p> <p>a) 1</p>	

	b) 3 c) 2 d) 5	
9	What is the degree of a zero polynomial? a) 0 b) 1 c) Any natural number d) Not defined	
10	The zero of the polynomial $p(x) = -9x + 9$ is: a) 0 b) -9 c) -1 d) 1	
11	$\sqrt{9}$ is a _____ number. a. Rational b. Irrational c. Neither rational or irrational d. None of the above	
12	$3\sqrt{6} + 4\sqrt{6}$ is equal to: a. $6\sqrt{6}$ b. $7\sqrt{6}$ c. $4\sqrt{12}$ d. $7\sqrt{12}$	
13	$\sqrt{12} \times \sqrt{15}$ is equal to: a) $5\sqrt{6}$ b) $6\sqrt{5}$ c) $10\sqrt{5}$ d) $\sqrt{25}$	
14	The coefficient of x^2 in $3x^3 + 2x^2 - x + 1$ is: a. 1	

	b. 2 c. 3 d. -1	
15	The value of $p(t) = 2+t+2t^2-t^3$ when $t=0$ is a. 2 b. 1 c. 4 d. 0	
16	<p>Fruits are an excellent source of essential vitamins and minerals, and they are high in fiber. Fruits also provide a wide range of health-boosting antioxidants, including flavonoids. Eating a diet high in fruits and vegetables can reduce a person's risk of developing heart disease, cancer, inflammation and diabetes. Radhika's mother gave her some money to buy Papaya from the market at the rate of $(x + 10)$ per kg.</p> <p>(i) Which mathematical concept is used here?</p> <p>(ii) If Radhika purchases $(x - 22)$ kg papaya, what amount she has to pay?</p> <p>(iii) If the apples are sold at the rate of $(x - 22)$ per kg, then how much she has to pay for x kg?</p>	
17	Represent $\sqrt{9.3}$ on the number line.	
18	If $a + b + c = 15$ and $a^2 + b^2 + c^2 = 83$, find the value of $a^3 + b^3 + c^3 - 3abc$.	
19	Find a and b, if $\frac{2\sqrt{5} + \sqrt{3}}{2\sqrt{5} - \sqrt{3}} + \frac{2\sqrt{5} - \sqrt{3}}{2\sqrt{5} + \sqrt{3}} = a + \sqrt{15}b$	
20	Compute the value of $9x^2 + 4y^2$ if $xy = 6$ and $3x + 2y = 12$.	

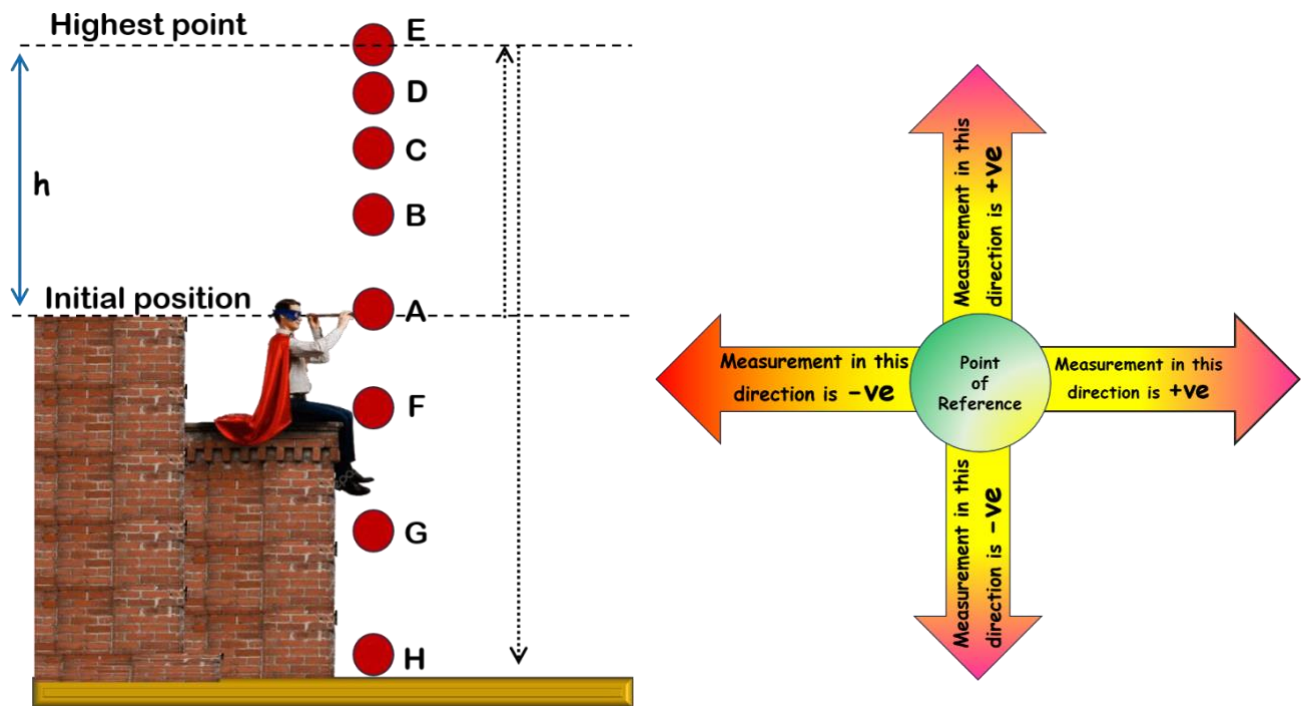
D.A.V. PUBLIC SCHOOL, DVC, MTPS
HOLIDAY HOMEWORK
SESSION: 2024-2025
CLASS: IX
SCIENCE

SECTION – A

SUBJECT: PHYSICS

Read the passage **carefully** and solve the following questions by deploying **Equations of Motion** for uniform acceleration along straight path:

[Reminder: Don't forget to consider sign convention while you deal with the vector quantities like displacement, velocity etc.]



One day Superman was sitting at the roof of a very tall building and was playing with a ball. While playing, he threw the ball **vertically upwards** from **position A** with an **initial velocity 40 m/s**. A **constant acceleration** of 10 m/s^2 due to gravity was acting on the ball in **downward direction**. After reaching at the highest point **E**, ball moved downwards and this time superman did not catch it. During the downward motion, while crossing the point **A**, the ball was displaced to the point **F** and then to **G** after each consecutive second. Finally, the ball hit the ground in after 11 seconds.

- (a) After each second if the ball was displaced to the point **B**, **C**, **D** and finally reached to point **E**, calculate the **displacement** of the ball after each second by taking point **A** as the **point of reference**.
- (b) Plot these calculated data in a **displacement-time (s-t)** graph with proper scale.
- (c) Find the velocities at points **B**, **C**, **D** and **E** while ball was ascending. Also plot these data in a **velocity-time (v-t)** graph with proper scale.
- (d) “When the ball was moving downwards after reaching at the highest point, the ball would be at the point **D**, **C**, **B**, **A** after every second”. Verify this statement by calculating the displacement from initial position, and, if it so, add these displacement values to the aforementioned **s-t** graph.
- (e) Also find the velocities at points **D**, **C**, **B** and **A** while ball was descending. Add the velocity values to the previous **v-t** plot.
- (f) Finally, Calculate the displacements of the ball from initial point when the ball was at the point **F**, **G** and **H**. Add the result to the same **s-t** graph. Also find the velocities at these points and complete the **v-t** graph.

SECTION – B

SUBJECT: CHEMISTRY

A. Select and write one most appropriate option out of the four options given for each of the following questions.

1. Which of the following statements is incorrect about the state of matter?

- (a) The force of attraction between the gas particles is very less.
- (b) Plasma consists of super energetic and super excited particles.
- (c) The plasma glows with a special colour depending on the nature of the gas.
- (d) Bose-Einstein condensate is formed by heating gas of extremely low density.

2. Which of the following conditions is most favourable for converting gas into liquid?

- (a) High pressure, low temperature
- (b) Low pressure, low temperature
- (c) Low pressure, high temperature

(d) High pressure, high temperature

B. Assertion - Reasoning based questions.

These consist of two statements – Assertion (A) and Reason (R). Answer these questions selecting the appropriate option given below:

- (a) Both A and R are true and R is the correct explanation of A
- (b) Both A and R are true and R is not the correct explanation of A
- (c) A is true but R is false
- (d) A is False but R is true

3. **Assertion:** When Sugar and Salt are kept in a container, they take the shape of the container.

Reason: Sugar is liquid.

4. **Assertion:** The rate of evaporation increases with increase in temperature.

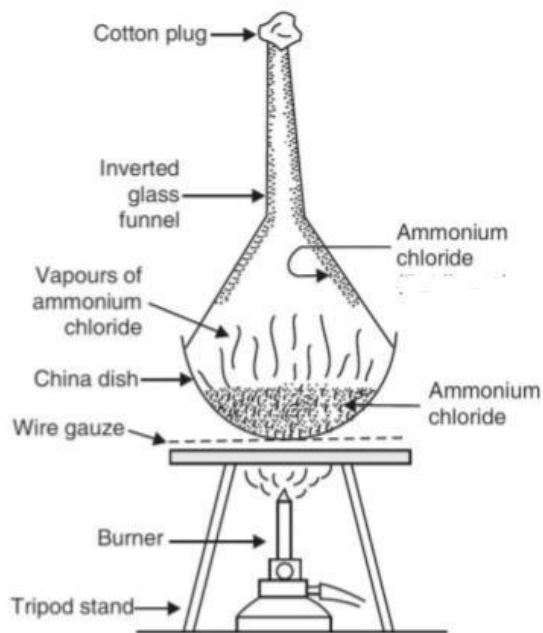
Reason: Increase in temperature decreases the kinetic energy of the particles.

C. Case study-based Question:

Read the following and answer any four questions from (i) to (v).

We take some ammonium chloride in a china dish and place the china dish on a tripod stand (see Figure). The china dish is covered with an inverted glass funnel. A loose cotton plug is put in the upper, open end of the funnel to prevent the ammonium chloride vapours from escaping into the atmosphere. The china dish is heated by using a burner. On heating, ammonium

chloride changes into white vapours. These vapours rise up and get converted into solid ammonium chloride on coming in contact with the cold, inner walls of the funnel (see Figure). In this way, ammonium chloride collects on the inner sides of the funnel in the form of a sublimate and can be removed.



(i) What name is given to the phenomenon which takes place?

(a) condensation (b) evaporation (c) sublimation (d) vaporisation

(ii) One of the following does not undergo sublimation. This one is :

(a) iodine (b) sodium chloride (c) ammonium chloride (d) camphor

(iii) The conversion of a solid into vapours without passing through the liquid state is called:

(a) vaporisation (b) fusion (c) sublimation (d) freezing

(iv) When heat is constantly supplied by a burner to boiling water, then the temperature of water during vaporisation:

(a) rises very slowly (b) rises rapidly until steam is produced
(c) first rises and then becomes constant (d) does not rise at all

(v) During summer days, water kept in an earthen pot (pitcher) becomes cool because of the phenomenon of:

(a) diffusion (b) transpiration (c) osmosis (d) evaporation

SECTION C : BIOLOGY

MCQ questions

- 1) Following are a few definitions of osmosis. Read carefully and select the correct definition
 - a. Movement of water molecules from a region of higher concentration to a region of lower concentration through a semi permeable membrane.
 - b. Movement of solvent molecules from its higher concentration to lower concentration.
 - c. Movement of solvent molecules from higher concentration to lower concentration of solution through a permeable membrane.
 - d. Movement of solute molecules from higher concentration to a lower concentration of solution through a semi permeable membrane.

- 2) Which cell organelle plays a crucial role in detoxifying many poisons and drugs in a cell?
 - a. Golgi apparatus
 - b. Lysosomes
 - c. Smooth endoplasmic reticulum
 - d. Vacuoles

- a. Cell arise from the pre-existing cells was stated by
 - a. Haeckel
 - b. Virchow
 - c. Hooke
 - d. Schleiden

- 3) *Chlamydomonas*, bacteria are
 - a. Prokaryotic cell
 - b. Eukaryotic cell
 - c. Unicellular organisms
 - d. None of the above.

The question below consists of an assertion and a Reason. Use the following key to choose the appropriate answer.

(a) Both A and R are true and R is the correct explanation of A.

(b) Both A and R are true but R is not the correct explanation of A.

(c) A is true but R is false.

(d) A is false but R is true.

4) Assertion(A): As there is a difference of concentration of CO₂ inside and outside a cell, CO₂ moves out of the cell.

Reason(R): The exchange of gases at cellular site takes place through diffusion.

5) Assertion(A): Some organisms have cells of different kinds.

Reason(R): The shape and size of cells are related to the specific function they perform.

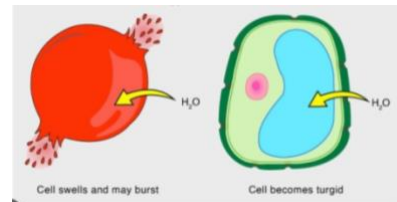
6. Read the passage carefully and answer the following questions

Cell walls permit some cells to withstand very dilute external media without bursting. In such media the cells tend to take up water by osmosis. The cell swells, building up pressure against the cell wall. The wall exerts an equal pressure against the swollen cell. Because of their walls, such cells can withstand much greater changes in the surrounding medium than animal cells.

1. How are cell wall and cell membrane different from each other?
- Cell membrane is permeable unlike cell wall.
 - Cell wall is made up of protein unlike cell membrane.
 - Cell membrane is selectively permeable unlike cell wall.
 - Cell wall is selectively permeable unlike cell membrane.

2. Observe the diagram carefully and mention the process carried out by the cell

- Endosmosis
- Exosmosis
- Plasmolysis
- None of the above



3. Mention the condition in which the cells are kept in the above diagram.

- Hypertonic solution
- Hypotonic solution
- Isotonic solution
- Sugar solution

4. State the type of cell which can withstand a very dilute media

- Fat cell
- Bacteria
- Yeast
- Both B and C

D.A.V. Public School, DVC, MTPS, Bankura – 722183

Academic Session: 2024 – 2025


Class: IX

Subject: Social Science

Summer Vacation Holiday Home Work

Q.NO.	QUESTIONS	MARKS										
Q.1	<p>Which of the following shows exchange of ideas due to land and sea trade in India?</p> <p>a) Trade of muslin and spices from other countries. b) Architectural styles of domes and minarets. c) Deccan peninsula protruding into Indian Ocean. d) Discovery of Trans - Himalayan Ocean routes.</p>	1										
Q.2	<p>Match the following and choose the correct option.</p> <table border="1"><thead><tr><th>Column -A</th><th>Column -B</th></tr></thead><tbody><tr><td>i) Rajasthan</td><td>A) Tropic of Cancer passes through it.</td></tr><tr><td>ii) Andhra Pradesh</td><td>B) Located in West coast</td></tr><tr><td>iii) Kerala</td><td>C) Located in East coast</td></tr><tr><td>iv) Mizoram</td><td>D) North of the Tropic of Cancer</td></tr></tbody></table> <p>a) i-B ; ii - A ; iii - D ; iv - C b) i-D ; ii - C ; iii - B ; iv - A c) i - D ; ii - A ; iii - B ; iv -C d) i - B ; ii - C ; iii -A ; iv - B</p>	Column -A	Column -B	i) Rajasthan	A) Tropic of Cancer passes through it.	ii) Andhra Pradesh	B) Located in West coast	iii) Kerala	C) Located in East coast	iv) Mizoram	D) North of the Tropic of Cancer	1
Column -A	Column -B											
i) Rajasthan	A) Tropic of Cancer passes through it.											
ii) Andhra Pradesh	B) Located in West coast											
iii) Kerala	C) Located in East coast											
iv) Mizoram	D) North of the Tropic of Cancer											
Q.3	<p>Assertion (A) The longitudinal extent of India appears to be smaller than latitudinal extent of India.</p> <p>Reason (R) The extent between two longitudes decreases when we move from the equator towards poles. But it doesn't happen with the latitudes.</p> <p>a) Both (A) and (R) are true but (R) is the correct explanation of (A) b) Both (A) and (R) are true but (R) is not the correct explanation of (A) c) (A) is true but (R) is false. d) (A) is false but (R) is true.</p>	1										
Q.4	<p>Choose the correct option</p> <p>To grow more than one crop on the same piece of land is called.</p> <p>a) Multiple cropping b) Plantation farming c) Mixed farming</p>	1										

	d) None of these	
Q.5	<p>Choose the appropriate chronological order:</p> <ul style="list-style-type: none"> i. Abolition of slavery ii. Louis XVI became the king of France iii. War of Waterloo iv. The storming of the Bastille <ul style="list-style-type: none"> a) i-ii-iii-iv b) iii-iv-i-ii c) ii-iv-iii-i d) iii-ii-i-iv 	1
Q.6	<p>French legacy to the world meant</p> <ul style="list-style-type: none"> a) Democracy b) Socialism and nationalism c) Republicanism d) Liberty, Freedom and Equality 	1
Q.7	<p>Which of the following was the main objective of the Constitution of 1791?</p> <ul style="list-style-type: none"> a) to limit the powers of the king alone b) do away with feudal privileges c) give equal rights to women d) establish a constitutional monarchy 	1
Q.8	<p>Assertion (A)- Since it's independence in 1980 Robert Mugabe has been elected as the President of Zimbabwe</p> <p>Reason (R)- ZANU-PF led the struggle for independence</p> <ul style="list-style-type: none"> a) Both (A) and (R) are true but (R) is the correct explanation of (A) b) Both (A) and (R) are true but (R) is not the correct explanation of (A) c) (A) is true but (R) is false. d) (A) is false but (R) is true. 	1
Q.9	<p>Consider the following statement and choose the incorrect option associated with Palampur village.</p> <ul style="list-style-type: none"> a) Palampur is having well developed road. b) Many houses in Palampur have electric connection. c) Palampur has a government primary health centre and a private dispensary. d) In Palampur people are dependent on fishing for their livelihood. 	1
Q.10	Choose the correct option.	1

	List I	List II	
	A. Land	1. Natural Resources	
	B. Fixed Capital	2. Assets	
	C. Working Capital	3. Raw materials and money	
	D. Human Capital	4. Knowledge and enterprises	
	Code		
	a) A-1, B-2, C-3, D-4	b) A-2, B-3, C-4, D-1	
	c) A-4, B-3, C-2, D-1	d) A-4, B-2, C-1, D-3	
Q.11	Highlight four differences between Traditional and Modern methods of farming.		2
Q.12	Distinguish between Himadri and Shiwalik.		2
Q.13	What signifies this Picture? Explain in brief		1+2
			
Q.14	“Many freedoms are taken away when a democracy is overthrown by the military”- Justify the statement with suitable examples.		3
	<p>MAP WORK:</p> <p>Level and identify in the Indian political map:</p> <p>A. Mountain ranges – The Karakoram, The Zaskar, The Inner Himalayas</p> <p>B. Mountain peaks- K2, Mt. Everest, Kanchenjunga</p>		
	<p>PROJECT WORK :</p> <p>A. Prepare a 3D clay model of Indian map showing the “Physical features of India”.</p> <p>B. Prepare a Mind Map of “The Story of Village Palampur”.</p>		